

BEST AVAILABLE COPY

FIG. 1

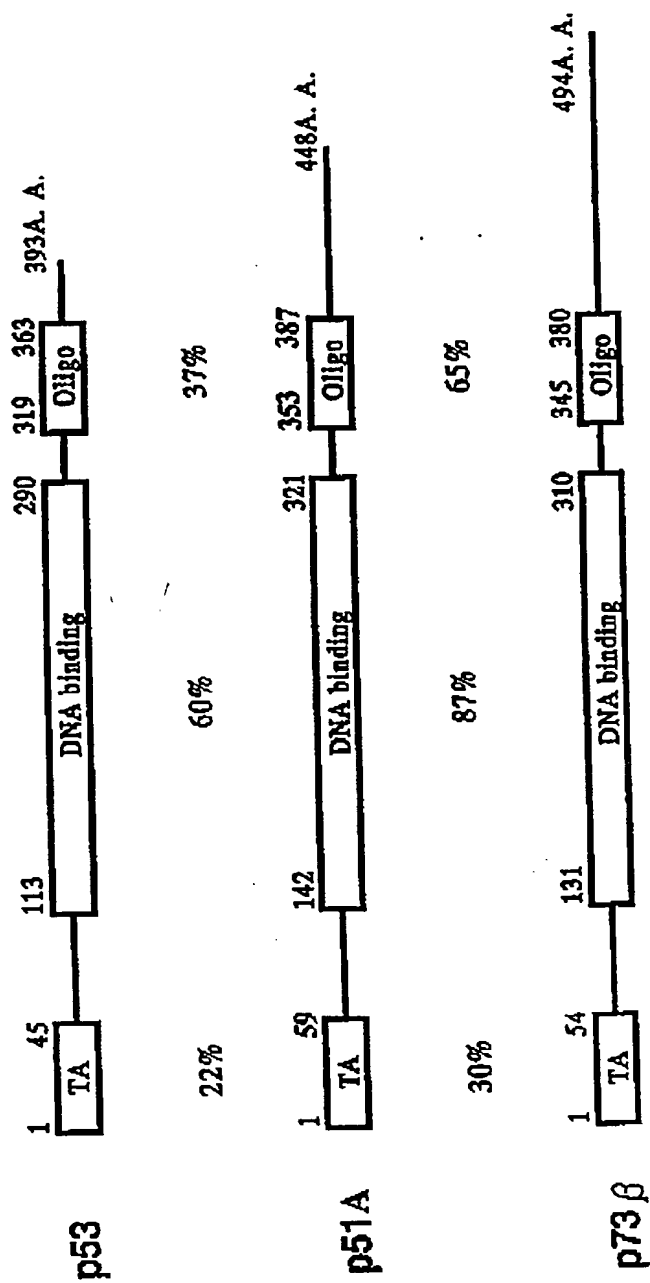


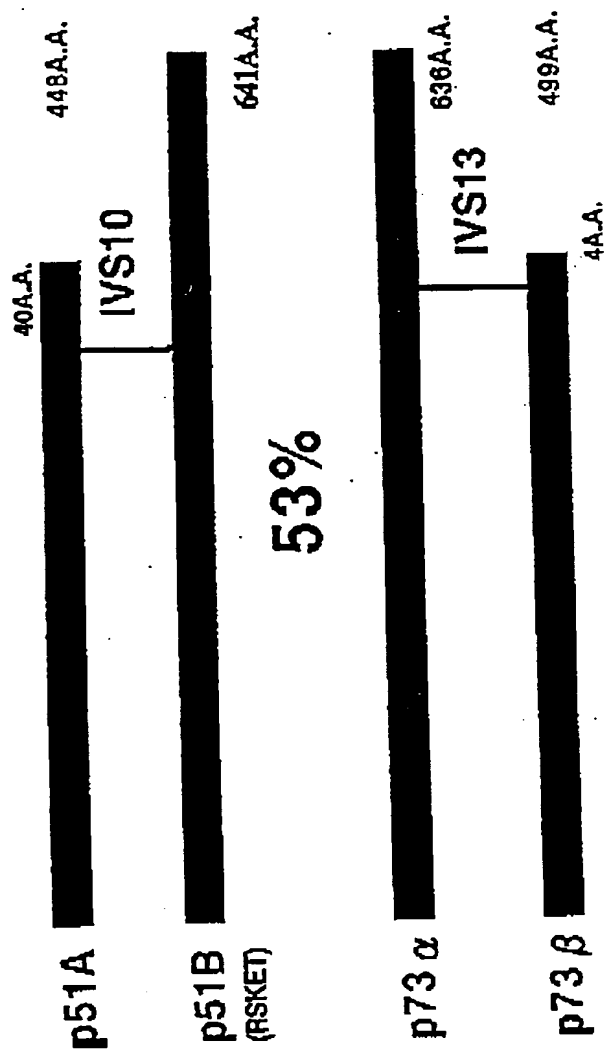
FIG. 2

p51A	MSQSTQTNEF	LSPEVFQHW	DLQEQPTCSV	QPIQUNFVDE	PSDQATNKEI	50
p73B	MAQSTATSP	DGCTTFEHLW	SSLE-POSTY	--FOUP-QSS	RGHNEVVGGT	45
p53	MEEPQSDPS	VEPPLSQETF	SLU-----	--WYL-----L	PENHVLSPLP	36
Consensus	..QST.T...	..P..FQH.W	SLE-P....	--..LL.....	P.MN.....	50
p51A	EISMCIHQ	DSLSDPHMP	QYTNLGLLNS	WQQQIONGSS	STSPYNTDHA	100
p73B	DSIMCVFHE	--GHTTSVMA	CF---NLLES	THQQSSRAA	SASPYTPEHA	90
p53	SOAMDLMLS	---POOI-E	OK---FTED	PGPDEAPRMP	EAPF-RYARA	76
Consensus	..SM...L.	---..D....	Q....LL.S	...Q...R..	SASPY...HA	100
p51A	QNSVTAPSPY	AGSSTFDAL	SPSPALPSNT	DYFQPHSDV	SPQSS-TAKS	150
p73B	--ASVPTNSPY	AGSSTFDTH	SPAPVPSNT	DYFQPHREV	TFQSS-TAKS	139
p53	--PAAPTPAA	PAPAPSW-PL	SSS--VPCK	TYGQSYGERL	QFLHS-TAKS	121
Consensus	..SVPTSPSY	AGSSTFD..L	SPSP..PSNT	DYFQPH..E.V	TFQSS-TAKS	150
p51A	ATHTYSTELK	RLYCCQAKTC	FCQINVTTP	FCQAVIRAMP	VYKAEHTE	200
p73B	ATHTYSPULK	RLYCCQAKTC	FCQINVTTP	FCQAVIRAMP	VYKAEHTE	189
p53	VHTYSPALN	RLYCCQAKTC	FCQINVTTP	FCQAVIRAMP	VYKAEHTE	171
Consensus	ATHTYSP..K	RLYCCQAKTC	FCQINVTTP	FCQAVIRAMP	VYKAEHTE	200
p51A	VVRCQPHL	SREFNEQIA	FPQHLIRVEG	NSHAGVEEP	VYKAEHTE	250
p73B	VVRCQPHL	GRDFNEQIA	FPQHLIRVEG	NHLSNVQOP	VYKAEHTE	239
p53	VVRCQPHL	CSD-SQC-LA	FPQHLIRVEG	NHLSNVQOP	VYKAEHTE	219
Consensus	VVRCQPHL	..RDFNEQIA	FPQHLIRVEG	..NSHAGVEEP	VYKAEHTE	250
p51A	YEPPVQTEF	TTLYVYFMCN	SSCGGNRR	PILITITLBT	RQCNLGRS	300
p73B	YEPPVQTEF	TTLYVYFMCN	SSCGGNRR	PILITITLBT	RQCNLGRS	289
p53	YEPPVQTEF	TTLYVYFMCN	SSCGGNRR	PILITITLBT	RQCNLGRS	269
Consensus	YEPPVQTEF	TTLYVYFMCN	SSCGGNRR	PILITITLBT	RQCNLGRS	300
p51A	FEARICACPG	RDRKAEDESI	RQQQVSD--S	TKMGDGYKRP	FRQNTHTGI-Q	347
p73B	FEARICACPG	RDRKAEDEHY	REQQALNESS	AKNGAASKRA	FRQSPPAVPA	339
p53	FEARICACPG	RDRKAEDEENL	RQKCEPH--H	ELPPGSKRA	LPNHTSS---	314
Consensus	FEARICACPG	RDRKAEDE..	RQKQ.....S	.KNG..YKRA	F.QNT.....	350
p51A	M-TSINKRRS	RDDELLYPY	RGRRTBMLL	KINGELEMNQ	YLPQNTIETY	396
p73B	LGAGVKKRK	QEDTYLUQV	RGRRTBMLL	KINGELEMNQ	YLPQNTIETY	389
p53	--SPQKCKP	LDGEYFLQI	RGRRTBMLL	ELNEALELKO	AQAGKEPGGS	362
ConsensusNKRR.	..E...YLUQV	RGRRTBMLL	KINGELEMNQ	..PQ.....Y	400
p51A	RQQQQQHQ	HL-----	---LQK-H-	---LLSACFRNE	LV-EPRKE--	427
p73B	RQQQQLLRP	HLPPPSYGP	VLSPIQKVG	GHNKLPSVNO	LVGQPPPHSS	439
p53	RAHSS----	HL-----	---K-----	---SKKGQ	---STSRH--	380
Consensus	RQQQQ.....	HL-----	---LQK-H-	---..NQ	LV-.P.RH--	450
p51A	--TPKQSDV	--FFR--HS	KPPH-----	-----	---RSVYP-	448
p73B	AATPHLGPGV	PGMLNHGHA	VPANGESSS	HSAGSMVSGS	HCTPPPPYKA	489
p53	---KKL---	---HFK---T	EGPD-----	---SD-----	---	393
Consensus	--TPKL..V.	---MF....H.	PPH-----	-----	---S.Y---	500
p51A	-----	-----	-----	-----	-----	448
p73B	DPQLVRTWGP	-----	-----	-----	-----	499
p53	-----	-----	-----	-----	-----	393
Consensus	-----	-----	-----	-----	-----	510

FIG. 3

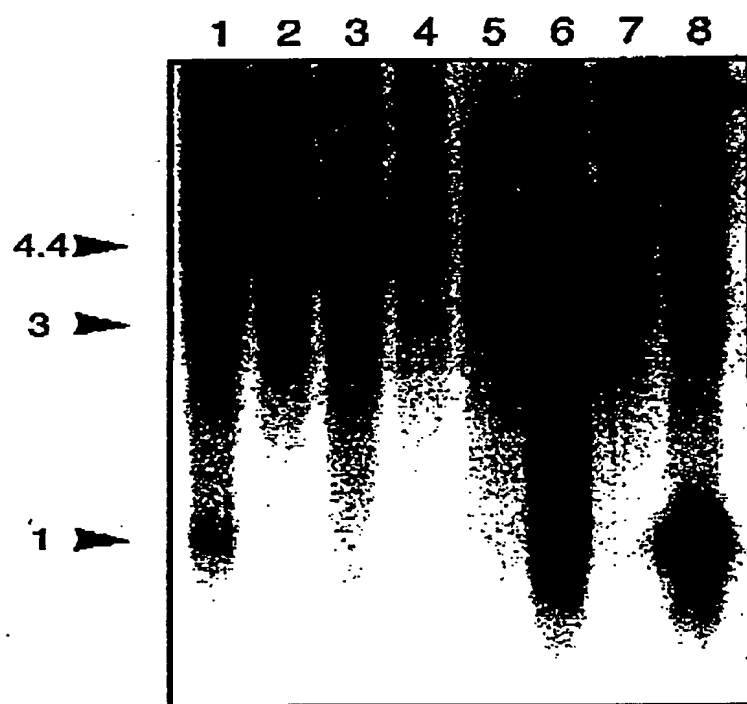
p518	EQSTSTNEF LSPENFCHIR DLEQFICSV QPDKHFVDL PSEDGATNKI	50
p73d	EQSTSTASP DGGTTEHHR ESLEIFOSTY --RQLP-QSS RGNNEVVGGT	45
Consensus	EQSTST... ..ESLEIFOSTY... ..RQLP-QSS	50
p518	ESMCCIRMQ DSOLSDPMP QYTHLCLHS MDCIIONCSS STSPYNTQHA	100
p73d	DSMCCVHRE --GHTYSMA QF--ALLSS IMDCIIONSSRAA SASPYTPHHA	90
Consensus	ESMCC... ..QYTHLCLHS... ..MDCIIONCSS... ..STSPYNTQHA	100
p518	QSVTAISPY AQPSSTFQAL SRAIPISNT DYPGPHFQV FQQSSTAKS	150
p73d	ASVPTISPY AQPSSTFQTM SRAIPISNT DYPGPHFQV FQQSSTAKS	139
Consensus	QSVTAISPY AQPSSTFQAL SRAIPISNT DYPGPHFQV FQQSSTAKS	150
p518	ATWTYSTLK KLYCQIARTC PIQIKVTPP RQANIRAMP VYKKAEMVTE	200
p73d	ATWTYSTLK KLYCQIARTC PIQIKVTPP RQANIRAMP VYKKAEMVTD	189
Consensus	ATWTYSTLK KLYCQIARTC PIQIKVTPP RQANIRAMP VYKKAEMVTE	200
p518	VYKRCPMHEL SRFNEGGLA FASHLIRVEG RSHQVYVDP VTGRQSVVVF	250
p73d	VYKRCPMHEL SRFNEGGLA FASHLIRVEG RSHQVYVDP VTGRQSVVVF	239
Consensus	VYKRCPMHEL SRFNEGGLA FASHLIRVEG RSHQVYVDP VTGRQSVVVF	250
p518	YEPPQVGTET TILYMFNCH SSCVGGHNR PILIITLET RDGQVLGRRC	300
p73d	YEPPQVGTET TILYMFNCH SSCVGGHNR PILIITLET RDGQVLGRRC	289
Consensus	YEPPQVGTET TILYMFNCH SSCVGGHNR PILIITLET RDGQVLGRRC	300
p518	FEARICACPG RDRKADESI RQCVSO--S YKMGCTKRP FQNTHTGI-Q	347
p73d	FEARICACPG RDRKADEHY RQCVSO--S YKMGCTKRP FQNTHTGI-Q	339
Consensus	FEARICACPG RDRKADESI RQCVSO--S YKMGCTKRP FQNTHTGI-Q	350
p518	M-TSIRKRRS RDELLYLV RGRBTGILL RKESLELMQ YLPQHTIET	396
p73d	LGAGYKRRH QEDTYLVV RGRBTGILL RKESLELMQ YLPQHTIET	389
Consensus	M-TSIRKRRS RDELLYLV RGRBTGILL RKESLELMQ YLPQHTIET	400
p518	RQQQQQCHN LLOKQTSICS FSYQVSSRP LHHN-SMVK LPSVQLINP	445
p73d	RQQQQQCHN LLOKQTSICS FSYQVSSRP LHHN-SMVK LPSVQLINP	433
Consensus	RQQQQQCHN LLOKQTSICS FSYQVSSRP LHHN-SMVK LPSVQLINP	450
p518	QQRNALTHT IPOGQANIP LMGTHNPMAG DNGLSPTQA LPPPISTST	495
p73d	PPPHSSAATP RLGPVQPG--MLNNGHAPV ANGESSSH--SAGSHVSG	478
Consensus	QQRNALTHT IPOGQANIP LMGTHNPMAG DNGLSPTQA LPPPISTST	500
p518	SHCTPPPPY TQSTVFLA ELGSSGLDY FTSQGLTIY QIENYSMDL	545
p73d	SHCTPPPPY TQSTVFLA ELGSSGLDY FTSQGLTIY QIENYSMDL	528
Consensus	SHCTPPPPY TQSTVFLA ELGSSGLDY FTSQGLTIY QIENYSMDL	550
p518	ASLKIPCEYR MATNQLIHH RQHEFSSPS HLLRTPSSAS YVSGSSETR	595
p73d	GALKIPEYR MATNQLIHH RQHEFSSPS HLLRTPSSAS YVSGSSETR	578
Consensus	ASLKIPCEYR MATNQLIHH RQHEFSSPS HLLRTPSSAS YVSGSSETR	608
p518	GRRVIGAVF YRRTTSRFP R-----DE RHPHFMDA RUKKCHIKE	638
p73d	RGRVIGAVF YRRTTSRFP R-----DE RHPHFMDA RUKKCHIKE	628
Consensus	GRRVIGAVF YRRTTSRFP R-----DE RHPHFMDA RUKKCHIKE	650
p518	--RGR--	641
p73d	EFTBARIH	636
Consensus	--RGR--	658

F I G. 4



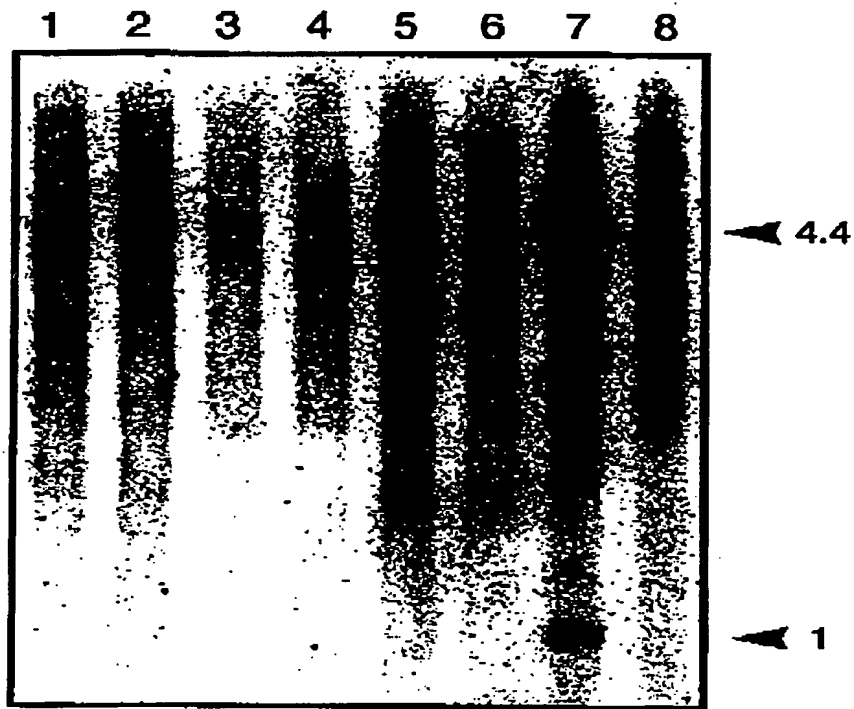
5/15

FIG. 5



6/15

FIG. 6



7/15

FIG. 7

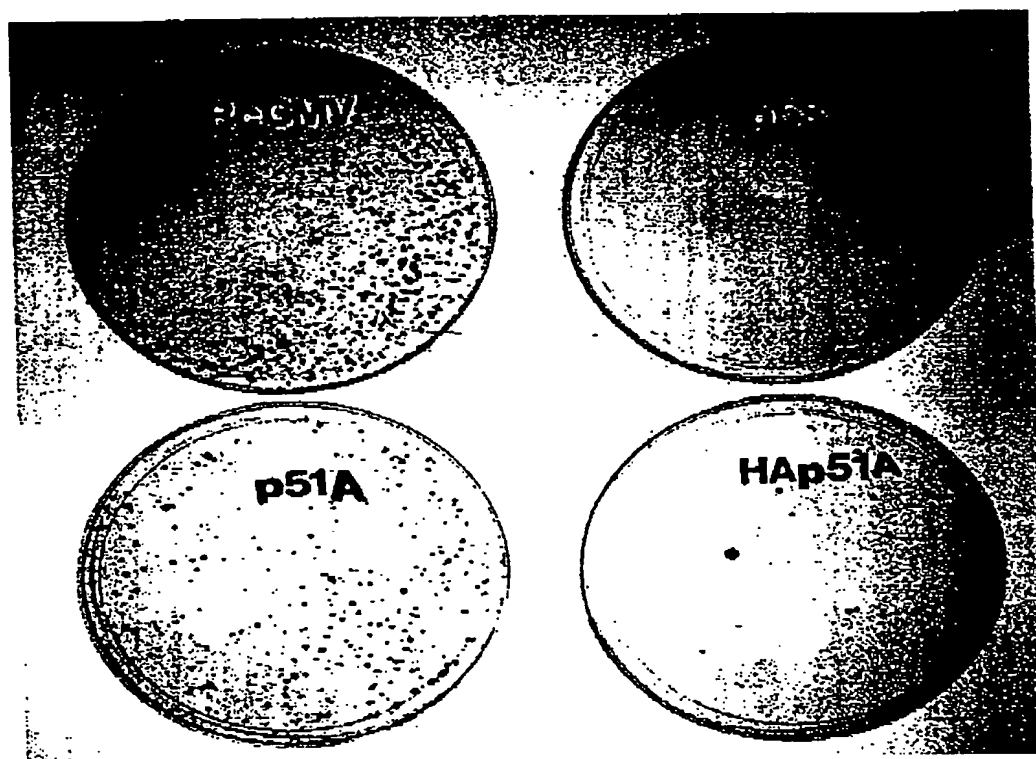


FIG. 8

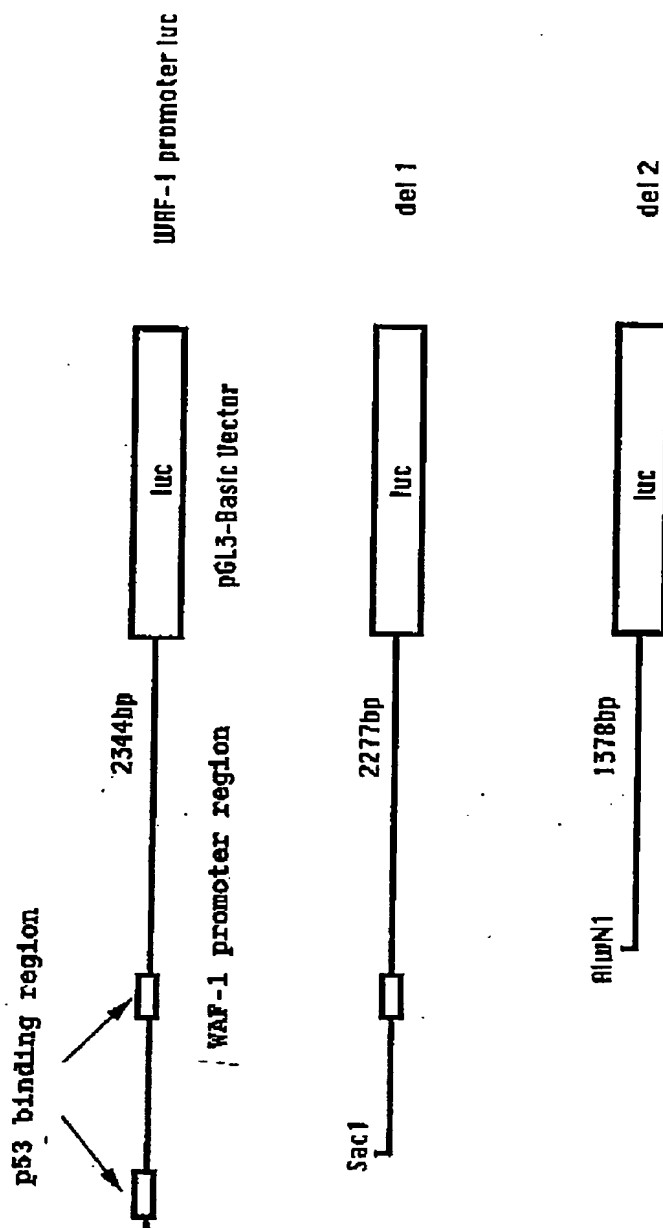


FIG. 9

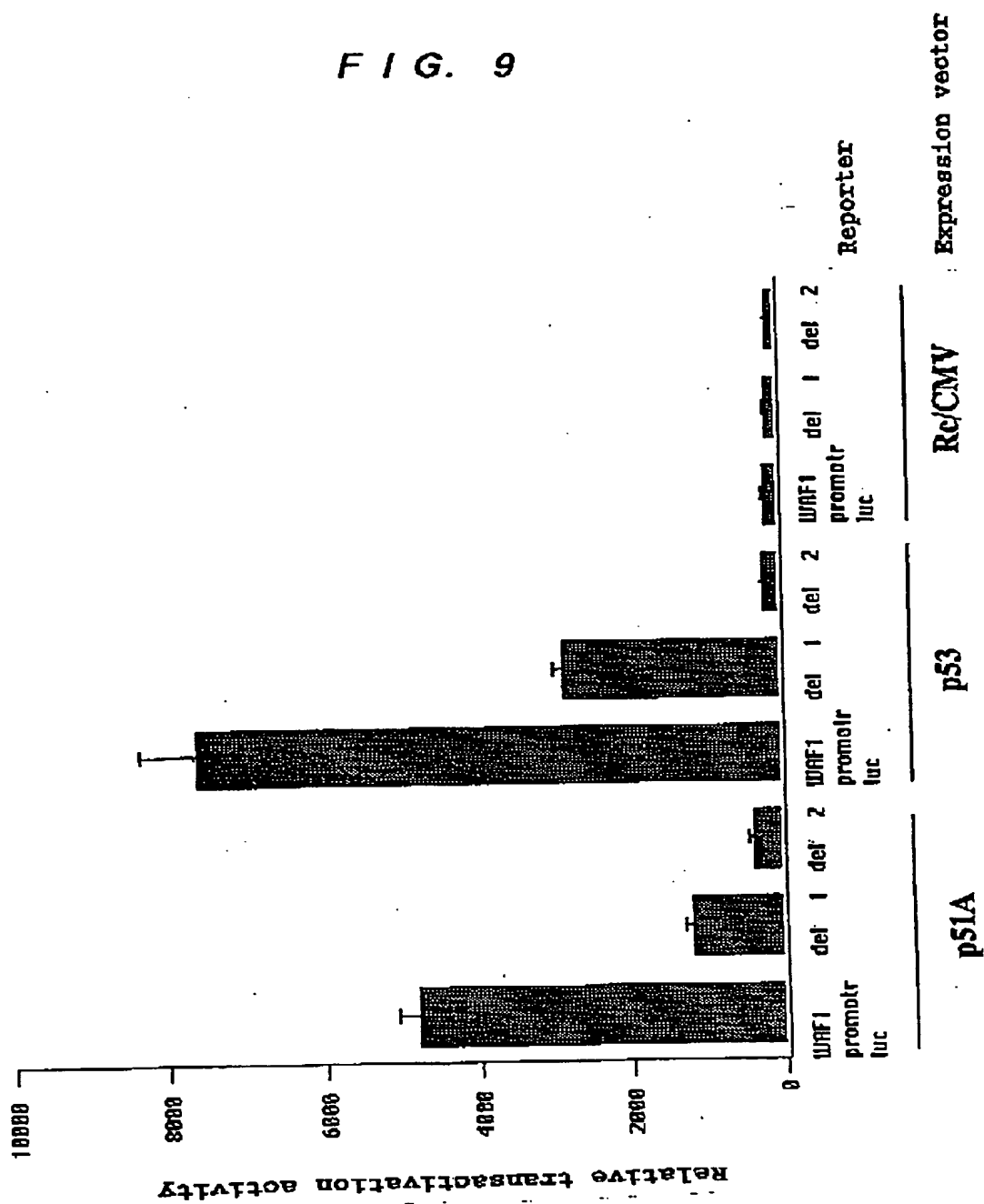


FIG. 10

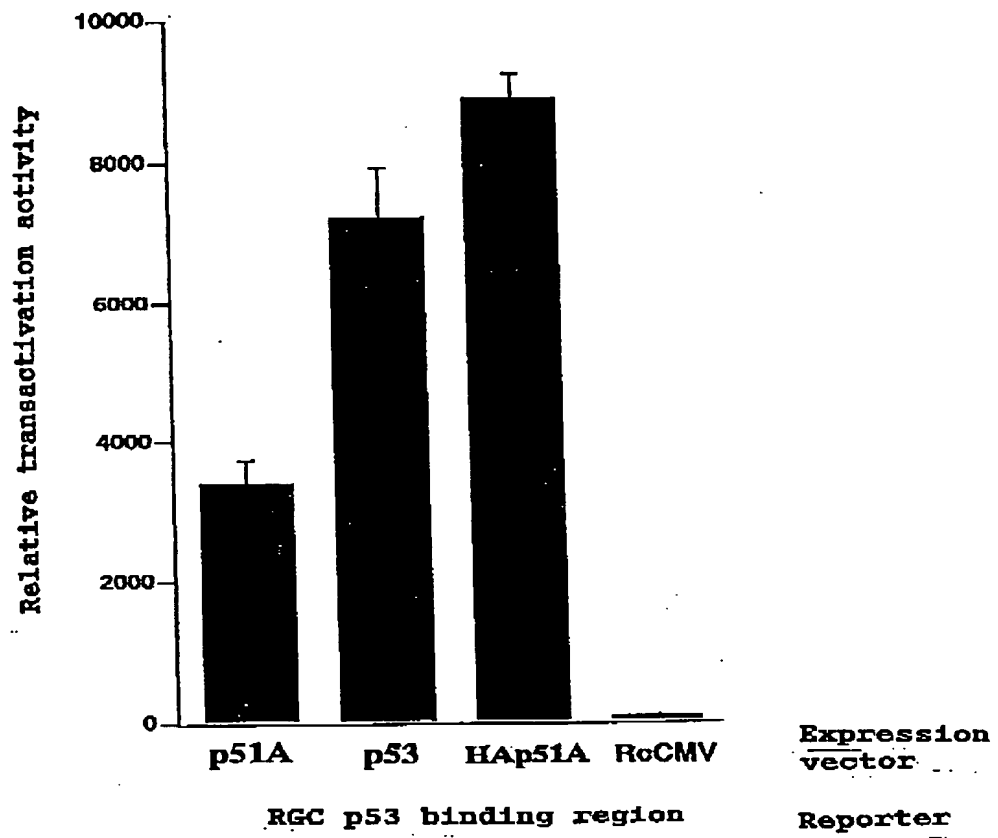


FIG. 11

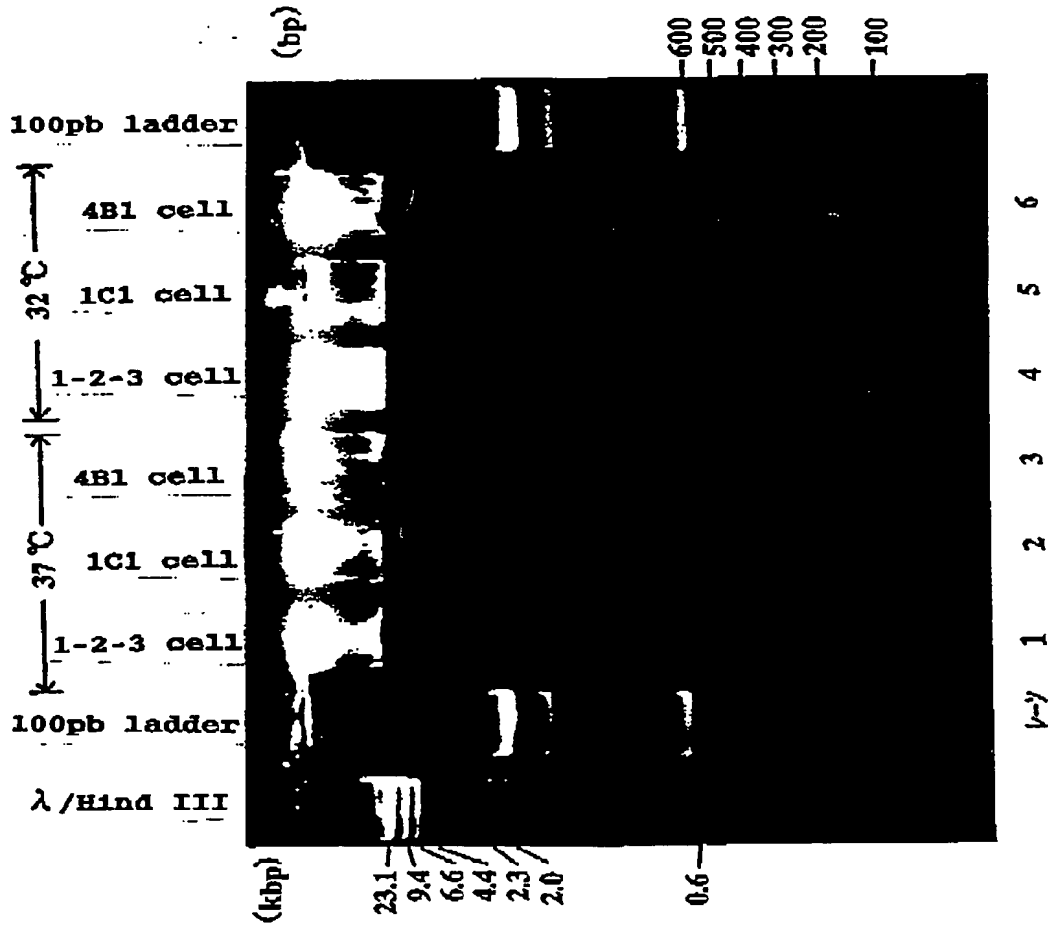


FIG. 12

mp51	1	ATGTCCAGAGCACCACAGACAGCGAGTTCCTCAGCCCAGAGGTCTTCCAGCATATCTGG	60
p51B	1	ATGTCCAGAGCACCACAGACAAATGAATTCCCTCAGTCCAGAGCTTTTCCAGCATATCTGG	60

mp51	61	GATTTTCTGGAACACCCATATATGCTCAGTACAGCCCATCGAGTTGAACTTTGTGGATGAA	120
p51B	61	GATTTTCTGGAACAGCCTATATGTTTCAATTTCAGCCCATTTGACTTGAACTTTGTGGATGAA	120

mp51	121	CCTTCCGAAAATGCTGCAACAAACAAGATTGAGATTAGCATGGATTGTATCCGCATGCAA	180
p51B	121	CCATCAGAAAGATGCTGCGACAAACAAGATTGAGATTAGCATGACTGTATCCGCATGCAAG	180

mp51	181	GACTCAGACCTCAGTGAACCCCATGTGGCCACAGTACACGAACCTGGGGCTCTGAAACAGC	240
p51B	181	GACTCGGACCTCAGTGAACCCCATGTGGCCACAGTACACGAACCTGGGGCTCTGAAACAGC	240

mp51	241	ATGGACCAGCAGATTCAGAACGGCTCCTCGTCCACCGCCCTACAAACACAGACCCAGCA	300
p51B	241	ATGGACCAGCAGATTCAGAACGGCTCCTCGTCCACCGCCCTACAAACACAGACCCAGCA	300

mp51	301	CAGAAATACCGTGACGGCGCCCTCGCCCTATGCACAGCCCAAGTCCACCTTTGATGCCCTC	360
p51B	301	CAGAACAGCGTCACGGCGCCCTCGCCCTAGCGCAGCCCAAGTCCACCTTTGATGCCCTC	360

mp51	361	TCTCCATCCCCCTGCCATTCCTTCCAACACAGATTACCCGCGCCCAACAGCTTCGATGTG	420
p51B	361	TCTCCATCACCCCGCCATCCCCCTCCAAACACCGACTACCCAGCCCGCCCAAGTTTCGACGTG	420

mp51	421	TCCTTCCAGCAGTCAAGCACTGCCAAGTCAGCCACCTGGACGTATTCCACCGAAGTGAAG	480
p51B	421	TCCTTCCAGCAGTCCAGCACCGCCCAAGTCGGCCACCTGGACGTATTCCACTGAAGTGAAG	480

mp51	481	AAGCTGTACTGCCAAGATTGCCAAGACATGCCCCATCCAGATCAAGGTGATGACCCACCC	540
p51B	481	AAACTGTACTGCCAAGATTGCCAAGACATGCCCCATCCAGATCAAGGTGATGACCCACCT	540

mp51	541	CCACAGGGGGCTGTTATCCGTGCCATGCCCTGTCTACAGAAAGCTGAGCATGTCCACGAG	600
p51B	541	CCACAGGGAGCTGTTATCCGTGCCATGCCCTGTCTACAAAAAGGTGAGCACGTCAAGGAG	600

mp51	601	GTTGTGAAGCGATGCCCTAACCATGAGCTGAGCCGTGAGTTCATGAGGGACAGATTGCC	660
p51B	601	GTGGTGAAGCGGTGCCCAACCATGAGCTGAGCCGTGAGTTCATGAGGGACAGATTGCC	660

mp51	661	CCTCCAGTCATCTGATTGAGTAGAAGGGAAACAGCCATGCCCAGTATGTAGAAGATCCCT	720
p51B	661	CCTCCTAGTCATTTGATTGAGTAGAAGGGAAACAGCCATGCCCAGTATGTAGAAGATCCCT	720

mp51	721	ATCAGGGGAAGGCAGAGCGTGCTGGTCCCTTATGAGCCACCAAGGTTGGCACTGAATTC	780
p51B	721	ATCAGGGAAGACAGAGTGCTGGTCCCTTATGAGCCACCAAGGTTGGCACTGAATTC	780

FIG. 13

mp51	781	ACBACBGTCTCTGTACAAATTTTCATGTGTAAACAGCAGCTGCGTCCGAGGAATGAACAGACGT	840
p51B	781	ACGACAGTCTTGTACAAATTTTCATGTGTAAACAGCAGTTGTGTGGAGGATGAACCGCCGT	840
		** ***** ** ** ***** ***** + ***	
mp51	841	CCAATTTTATCATCTGTTACTCTGGAACCAGAGATGGGCAAGTCCTGGGCCGACGGTGC	900
p51B	841	CCAATTTTAAATCATCTGTTACTCTGGAACCAGAGATGGGCAAGTCCTGGGCCGACGGTGC	900

mp51	901	TTTGAGGCCCGGATCTGTCTTGGCCAGGAAGAGACCCGAAAGGCAGATGAAGACGCATC	960
p51B	901	TTTGAGGCCCGGATCTGTCTTGGCCAGGAAGAGACAGGAAGGCCGATGAAGATAGCATC	960

mp51	961	AGAAAGCAGCAAGTATCGGACAGCGCAAGGACGGCGATGGTACGAAGCGCCCTTCCGT	1020
p51B	961	AGAAAGCAGCAAGTTTCGGACAGTACAAAGAACGGTGATGGTACGAAGCGCCCGTTTCGT	1020

mp51	1021	CAGAATACACACGGAATCCAGATGACTTCCATGAGAAACGGAGATCCCGAGATGATGAG	1080
p51B	1021	CAGAACACACATGGTATCCAGATGACATCCATCAACABACGAGATCCCGAGATGATGAA	1080

mp51	1081	CTGCTGTACCTACCACTGAGAGGTCTGAGACGTACGAGATGTTGCTGAAGATCABAGAG	1140
p51B	1081	CTGTATACTTACCACTGAGAGGTCTGAGACGTATGAAATGCTGTTGAAGATCABAGAG	1140
		*** : *** ***** ** ***** ** ** *****	
mp51	1141	TCACTCGAGCTCATGCACTACCTCCCTCAGGACACGATCGAAACGCTACAGGCGCAGCAG	1200
p51B	1141	TCCTCGAATCATGCACTACCTCCCTCAGGACACATTTGAACGCTACAGGCAACAGCAA	1200
		** *****	
mp51	1201	CAGCAGCAGCACCAGCACCTACTTCAGAAACAGACCTCCATGCACTCTCAGTCTTTCATAT	1260
p51B	1201	CAGCAGCAGCACCAGCACCTACTTCAGAAACAGACCTCAATACAGTCTCCATCTTTCATAT	1260

mp51	1261	GGCAACAGTTCCCCACCTCTGAACAAATGAACAGCATGAACAGCTGCCTTCCGTGAGC	1320
p51B	1261	GGTAACAGTCCCCACCTCTGAACAAATGAACAGCATGAACAGCTGCCTTCTGTGAGC	1320
		** *****	
mp51	1321	CAGCTTATCAACCCACAGCAGCGGAATGCCCTCACTCCCACCCATGCTGAGGGCATG	1380
p51B	1321	CAGCTTATCAACCCCTCAGCAGCGCAACGCCCTCACTCCCTACACCATTCCTGATGGCATG	1380

mp51	1381	GGAGCCAAACATTCCTATGATGGGCACCTCACATGCCAATGGCTGGAGACATGAATGGACTC	1440
p51B	1381	GGAGCCAAACATTCCTATGATGGGCACCCACATGCCAATGGCTGGAGACATGAATGGACTC	1440

mp51	1441	AGCCCTACCCAGCTGTCCCTCCCTCCACTCTCCATGCCCTCCACCTCCCACTGCACCCCA	1500
p51B	1441	AGCCCCACCCAGGCACTCCCTCCCGCACTCTCCATGCCATGCCCTCCCACTGCACACCC	1500

mp51	1501	CCACCGCCCTACCCACAGACTGCAGCATTGTCACTTTCTTAGCAAGCTTGGGCTGCTCA	1560
p51B	1501	CCACCTCGTATCCCAAGATTGCAGCATTGTCACTTTCTTAGCGAGCTTGGGCTGCTCA	1560

FIG. 14

```

mp51 1561 TCATGCCTGGACTATTTACGACCCAGGGGCTGACCAACCATCTATCAGATTGAGCATTAC 1620
p51B 1561 TCATGTCTGGACTATTTACGACCCAGGGGCTGACCAACCATCTATCAGATTGAGCATTAC 1620
*****

mp51 1621 TCCATGGATGATTTGGCAAGTCTGAAGATCCCTGAACAGTTCCGACATGCCATCTGGAG 1680
p51B 1621 TCCATGGATGATCTGGCAAGTCTGAAATCCCTGAGCAATTTGACATGCCATCTGGAG 1680
*****

mp51 1681 GGCATCCTGGACCACAGGCGAGCTGCACGACTTCTCCTCACCTCCTCATCTCCTGAGGACC 1740
p51B 1681 GGCATCCTGGACCACGGCAGCTCCACGAATTCCTCCCTTCTCATCTCCTGCGGACC 1740
*****

mp51 1741 CCAAGTGGTGCCTCTBCCGTCAGTCTGGGCTCCAGTGAGACCCGTCCTGAACGTGTGATC 1800
p51B 1741 CCAAGCAGTGCCTCTBACATCAGTGTGGGCTCCAGTGAGACCCGGGTGAGCGTGTATT 1800
*****

mp51 1801 GATGCCGTGCGCTTTACCCCTCCGCCAGACCATCTCTTTTCCACCCCGTGACGAGTGGAT 1860
p51B 1801 GATGCTGTGCGATTACCCCTCCGCCAGACCATCTCTTTTCCACCCCGTGAGTGGAT 1860
*****

mp51 1861 GATTTCAACTTTGACATGGATTCTGTCGCAACAAGCAGCAGCGTATCAAAGAGGAAGGA 1920
p51B 1861 GACTTCAACTTTGACATGGATTGCTCGCCGCAATAGCAGCAGCGCATCAAAGAGGAGGGG 1920
**

mp51 1921 GAA 1923
p51B 1921 GAG 1923
**

```

FIG. 15

mp51BnAA	MSQSTQTSEFLSPEVTFQHIWDFLEQWICSVQPIELNFVDEPSENGATNKIEISMDCIKMQ	60
p51B aa	MSQSTQTNEFLSPEVTFQHIWDFLEQWICSVQPIELNFVDEPSENGATNKIEISMDCIKMQ	60

mp51BnAA	DSDLSOPMWPQYTNLGLLNSMDQQIQNGSSSTSPYNTDHAQNSVTAPSPFYAQPSSSTFDAL	120
p51B aa	DSDLSOPMWPQYTNLGLLNSMDQQIQNGSSSTSPYNTDHAQNSVTAPSPFYAQPSSSTFDAL	120

mp51BnAA	SPSPAIPSNTOYPGPHSFDVSTFQSSSTAKSATWTYSTELEKLYCQIAKTCFIQIKVMTFF	180
p51B aa	SPSPAIPSNTOYPGPHSFDVSTFQSSSTAKSATWTYSTELEKLYCQIAKTCFIQIKVMTFF	180

mp51BnAA	PQGAVIRAMPVYKKAHVTEVVKRCFNEHLSREFNEGQIAPPSHLIRVEGNSHAQYVEDP	240
p51B aa	PQGAVIRAMPVYKKAHVTEVVKRCFNEHLSREFNEGQIAPPSHLIRVEGNSHAQYVEDP	240

mp51BnAA	ITGRQSVLVPIYEPFQVGTFTTLYNFMCNSSCVGGMNRRPILITVLETRDGOVLGRRC	300
p51B aa	ITGRQSVLVPIYEPFQVGTFTTLYNFMCNSSCVGGMNRRPILITVLETRDGOVLGRRC	300

mp51BnAA	FEARICACFGRDRKADEDSIRKQOVSDSARKNGDOTRPFRTQNTHECIQNTSIKRRSPDDE	360
p51B aa	FEARICACFGRDRKADEDSIRKQOVSDSARKNGDOTRPFRTQNTHECIQNTSIKRRSPDDE	360

mp51BnAA	LLYLPVVRGRETIEMLLKIKESLELMQYLPQBTIETTRQQQQQQHQLLQKQTSMSQSESY	420
p51B aa	LLYLPVVRGRETIEMLLKIKESLELMQYLPQBTIETTRQQQQQQHQLLQKQTSMSQSESY	420

mp51BnAA	GNSSPFLNKMNSMKNLPSVSQLINPQORNALTPPTMPEGMGANIPMMGTMPMAGDMNGL	480
p51B aa	GNSSPFLNKMNSMKNLPSVSQLINPQORNALTPPTMPEGMGANIPMMGTMPMAGDMNGL	480

mp51BnAA	SPTQALPFFLAMPSTSHCTPPFPPTDCSIVSFLARLGCSSCLDYFTTQGLTIYQIEHY	540
p51B aa	SPTQALPFFLAMPSTSHCTPPFPPTDCSIVSFLARLGCSSCLDYFTTQGLTIYQIEHY	540

mp51BnAA	SMODLASLKIFEQFRHAIWKGLDERQLHDFSSPPLLRTPSGASTVSVGSSETRGSERVI	600
p51B aa	SMODLASLKIFEQFRHAIWKGLDERQLHDFSSPPLLRTPSGASTVSVGSSETRGSERVI	600

mp51BnAA	DAVRUTLRQTISFFPRDEWDFNFDMDERRNKQORIKKEGE	641
p51B aa	DAVRUTLRQTISFFPRDEWDFNFDMDERRNKQORIKKEGE	641

**This Page is Inserted by IFW Indexing and Scanning
Operations and is not part of the Official Record**

BEST AVAILABLE IMAGES

Defective images within this document are accurate representations of the original documents submitted by the applicant.

Defects in the images include but are not limited to the items checked:

☐ **BLACK BORDERS**

☐ **IMAGE CUT OFF AT TOP, BOTTOM OR SIDES**

☒ **FADED TEXT OR DRAWING**

☒ **BLURRED OR ILLEGIBLE TEXT OR DRAWING**

☐ **SKEWED/SLANTED IMAGES**

☐ **COLOR OR BLACK AND WHITE PHOTOGRAPHS**

☐ **GRAY SCALE DOCUMENTS**

☐ **LINES OR MARKS ON ORIGINAL DOCUMENT**

☐ **REFERENCE(S) OR EXHIBIT(S) SUBMITTED ARE POOR QUALITY**

☐ **OTHER:** _____

IMAGES ARE BEST AVAILABLE COPY.

As rescanning these documents will not correct the image problems checked, please do not report these problems to the IFW Image Problem Mailbox.